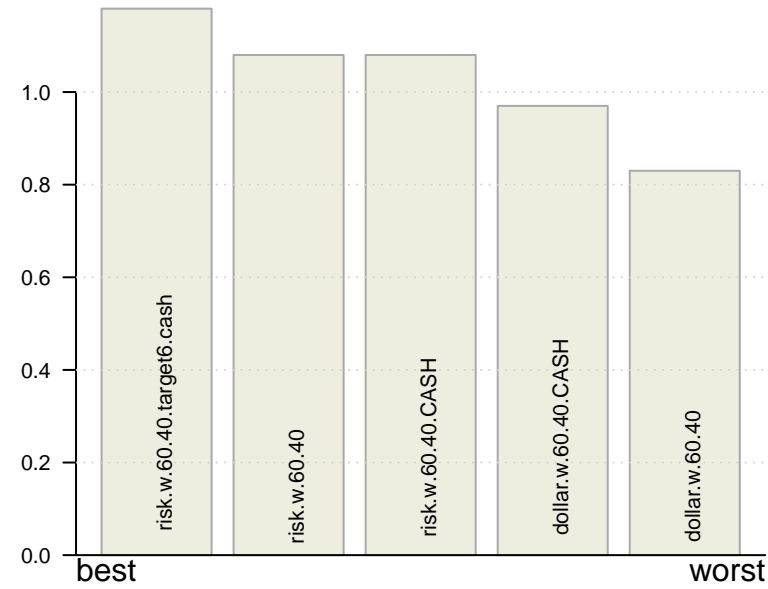
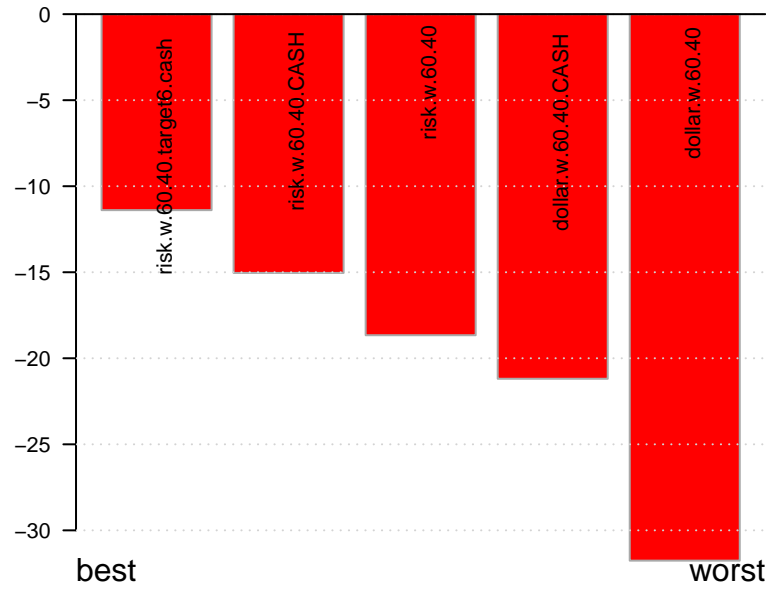
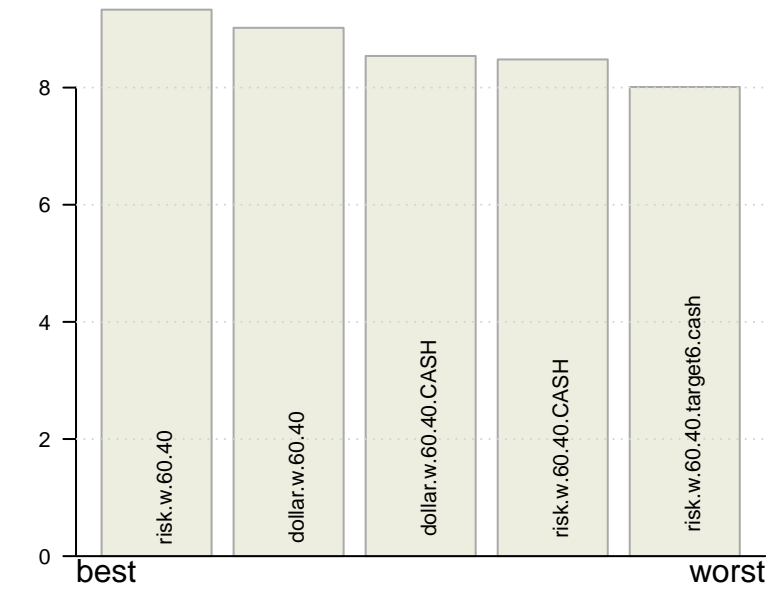
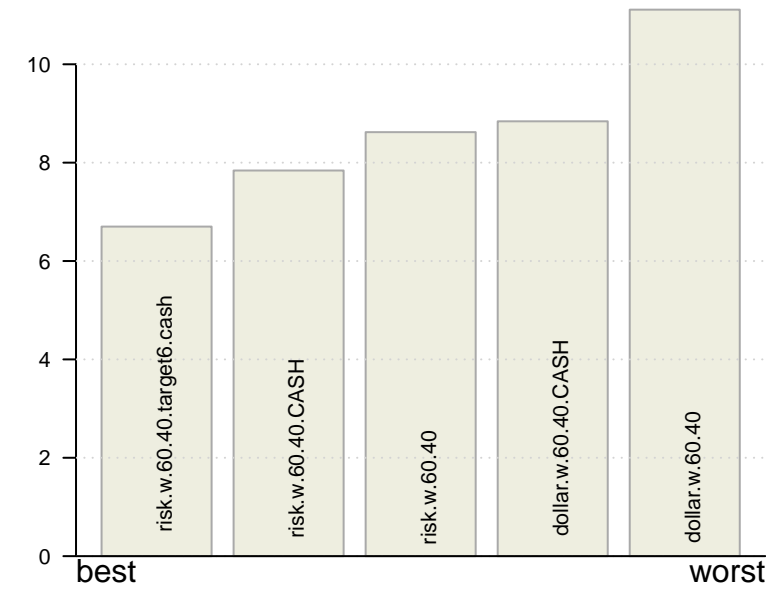
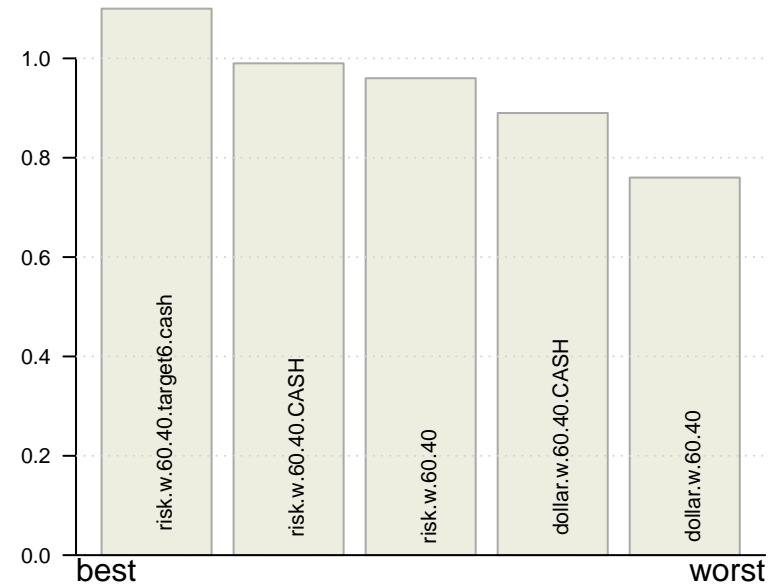
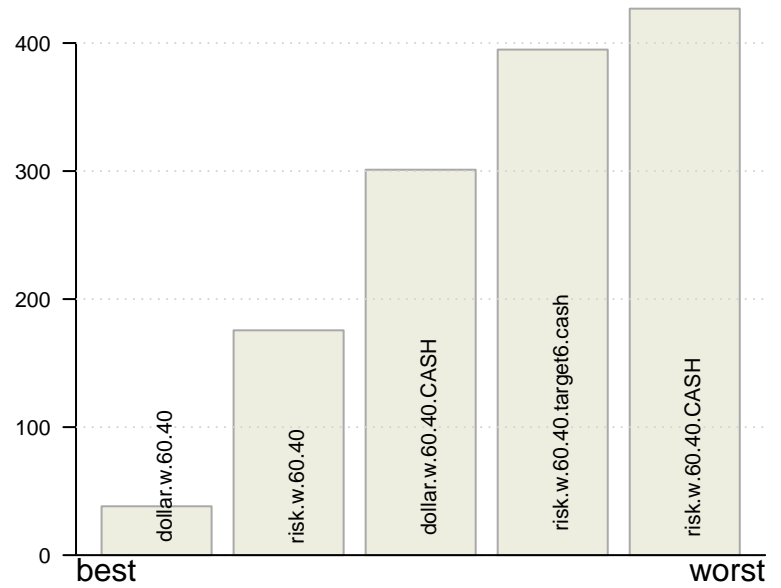
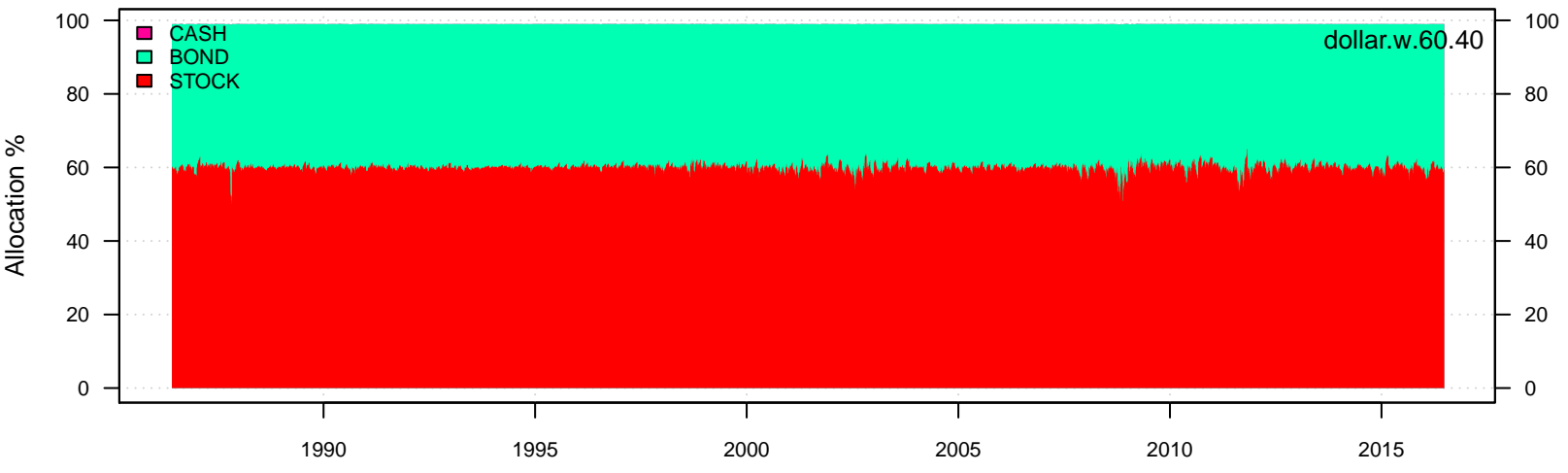


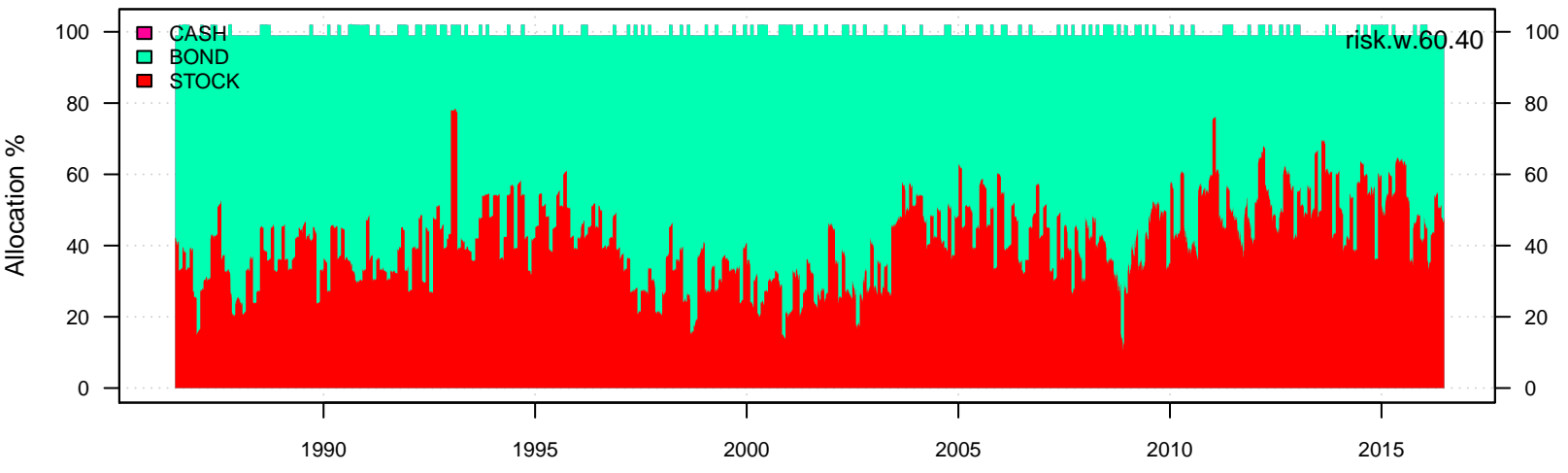
System	dollar.w.60.40	risk.w.60.40	risk.w.60.40.CASH	dollar.w.60.40.CASH	risk.w.60.40.target6.cash
Period	May1986 – Jun2016	May1986 – Jun2016	May1986 – Jun2016	May1986 – Jun2016	May1986 – Jun2016
Cagr	9.02	9.33	8.48	8.54	8.01
Sharpe	0.83	1.08	1.08	0.97	1.18
DVR	0.76	0.96	0.99	0.89	1.1
Volatility	11.11	8.62	7.84	8.84	6.7
MaxDD	-31.76	-18.66	-15.04	-21.19	-11.39
AvgDD	-1.46	-1.3	-1.27	-1.35	-1.05
VaR	-1.06	-0.84	-0.78	-0.86	-0.66
CVaR	-1.6	-1.2	-1.12	-1.28	-0.95
Exposure	99.88	99.6	99.88	99.88	99.31

Sharpe**MaxDD****Cagr****Volatility****DVR****Turnover**

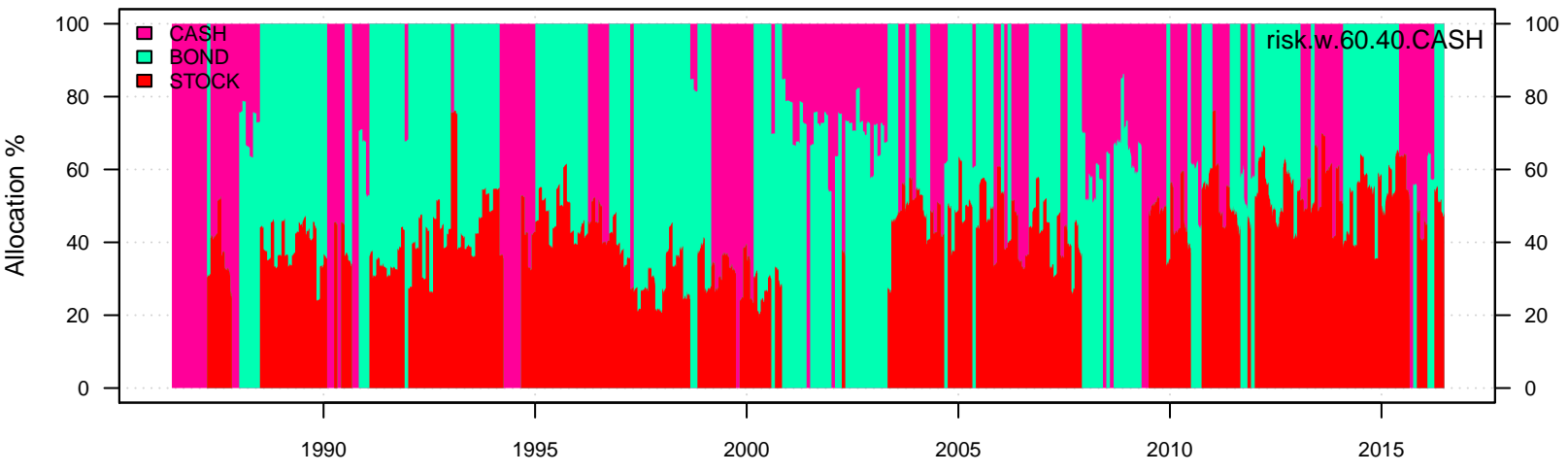
Transition Map for dollar.w.60.40



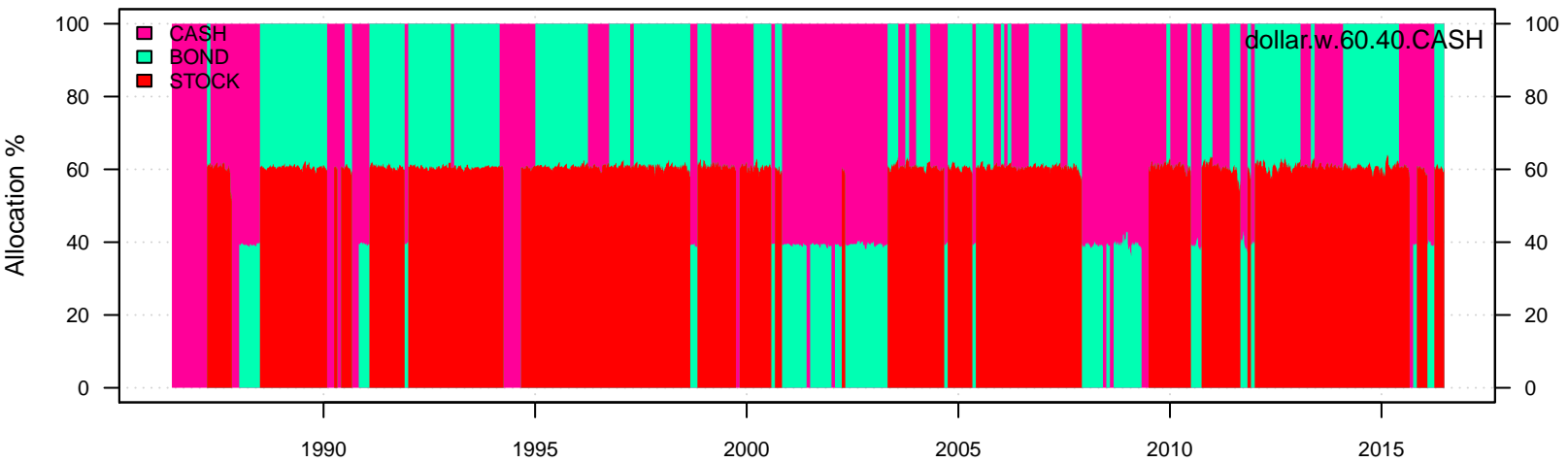
Transition Map for risk.w.60.40



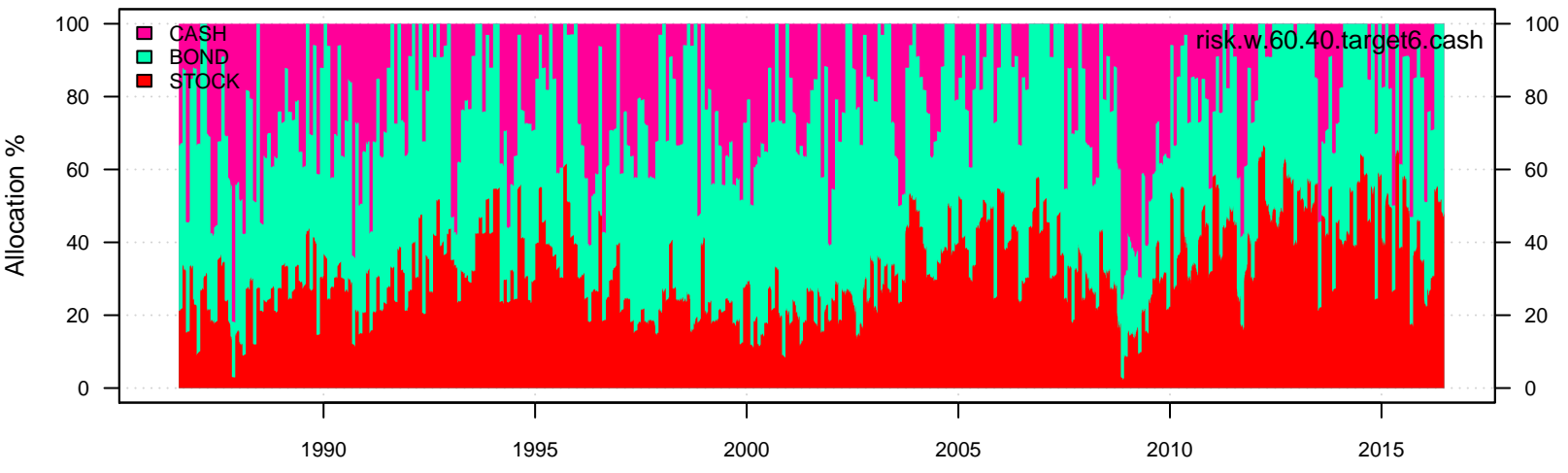
Transition Map for risk.w.60.40.CASH



Transition Map for dollar.w.60.40.CASH



Transition Map for risk.w.60.40.target6.cash



dollar.w.60.40	Jan	Feb	Mar	Apr	May	Jun	Jul	Aug	Sep	Oct	Nov	Dec	Year	MaxDD	
1986							2.2	-3.8	6.3	-6.4	4.0	2.3	-5.8	-2.1	-7.2
1987	8.3	2.8	1.1	-2.5	0.0	3.6	2.5	1.7	-2.8	-10.8	-4.7	5.1	2.8	-22.8	
1988	4.3	3.2	-2.7	0.1	-0.2	4.3	-1.0	-1.9	4.0	2.6	-1.6	0.0	11.4	-6.1	
1989	5.2	-2.2	1.7	4.1	3.6	2.0	6.2	0.0	-0.2	0.1	1.5	1.4	25.6	-4.1	
1990	-5.5	0.6	1.4	-2.8	7.5	0.5	0.0	-7.1	-2.5	0.6	5.6	2.4	0.1	-13.1	
1991	3.0	4.4	1.5	0.6	2.5	-3.1	3.4	2.7	0.1	0.7	-2.4	9.3	24.7	-4.1	
1992	-2.3	0.9	-1.6	1.6	1.4	-1.8	3.9	-1.0	1.3	-0.1	2.7	2.1	6.3	-4.3	
1993	1.7	1.9	1.4	-3.8	1.7	-0.8	0.2	3.8	-0.9	1.4	-1.6	0.9	12.2	-3.6	
1994	2.3	-3.3	-4.8	0.2	0.8	-1.7	3.1	0.2	-3.1	1.1	-3.3	1.0	-2.7	-9.9	
1995	3.0	3.5	1.9	2.4	5.3	1.6	1.4	1.1	3.2	1.0	3.6	1.4	34.3	-2.5	
1996	2.1	-1.8	0.2	-0.1	1.2	1.3	-2.7	0.6	4.4	3.4	5.6	-2.4	12.3	-6.4	
1997	3.4	0.5	-3.6	4.7	4.2	3.1	6.8	-4.1	3.9	-0.3	2.8	1.8	25.1	-8.0	
1998	1.5	3.8	3.0	0.9	-0.5	3.5	-1.0	-6.6	5.1	4.2	3.7	3.8	22.8	-9.7	
1999	2.5	-3.8	2.3	2.3	-2.0	2.9	-2.1	-0.5	-1.0	3.9	0.8	2.8	7.9	-8.4	
2000	-2.8	0.2	7.0	-2.4	-1.1	2.1	-0.4	4.7	-3.6	0.3	-3.3	0.6	1.0	-8.3	
2001	2.8	-5.0	-3.6	4.1	-0.3	-1.2	0.8	-2.8	-4.6	2.8	2.7	-0.4	-5.2	-17.1	
2002	-0.1	-0.6	0.5	-2.1	-0.2	-3.8	-3.7	2.5	-4.7	3.5	3.3	-1.7	-7.2	-17.4	
2003	-1.7	0.7	-0.4	5.5	5.7	-1.5	-2.8	1.7	1.6	2.0	0.8	3.5	17.0	-8.4	
2004	1.9	1.4	-0.3	-3.6	0.9	-0.1	1.8	1.8	1.0	1.4	1.7	2.8	9.7	-7.1	
2005	0.0	0.7	-1.3	0.4	3.1	0.9	1.0	0.8	-0.9	-2.3	2.9	1.0	6.2	-4.6	
2006	0.5	0.8	-0.8	-0.3	-1.9	0.6	1.1	2.5	2.1	2.2	2.1	-0.3	9.4	-4.8	
2007	0.5	0.1	0.0	3.0	1.1	-1.3	-0.6	1.4	2.4	-0.3	1.0	-0.8	7.1	-4.9	
2008	-3.8	-1.7	0.0	0.2	-0.2	1.0	-5.1	-2.0	-4.4	-1.7	1.4	5.9	-13.8	-26.4	
2009	-10.0	-7.1	6.6	3.2	2.0	0.2	4.7	3.1	2.1	-2.2	4.1	5.1	-20.4	-20.4	
2010	-1.2	1.7	2.8	2.2	-2.8	-0.8	3.7	0.6	4.4	0.5	-0.7	2.5	13.5	-5.1	
2011	0.2	2.7	0.0	2.6	0.6	-1.9	0.5	0.5	1.0	5.0	0.5	2.0	14.3	-6.3	
2012	2.6	1.6	0.3	1.5	-0.1	1.8	2.2	1.0	0.5	-1.3	0.8	-0.8	10.7	-3.2	
2013	1.8	1.2	2.1	3.0	-1.2	-2.1	2.2	-2.3	2.1	3.3	0.7	0.8	12.0	-6.2	
2014	0.3	2.9	0.8	1.2	2.5	1.1	-0.6	4.2	-1.7	2.5	2.8	1.1	18.4	-3.0	
2015	2.0	1.0	-0.5	-0.8	-0.2	-2.8	3.1	-3.9	-0.8	4.9	-0.1	-1.2	0.4	-8.0	
2016	-0.8	1.1	4.0	-0.1	1.3	0.2	0.2	0.3	-0.8	0.3	-0.3	-0.9	0.5	-3.4	
Avg	0.8	0.4	0.7	1.0	1.2	0.4	0.9	0.5	0.1	0.9	1.2	1.3	9.3	-8.5	

risk.w.60.40	Jan	Feb	Mar	Apr	May	Jun	Jul	Aug	Sep	Oct	Nov	Dec	Year	MaxDD	
1986							-0.1	-2.9	5.7	-5.6	2.9	2.1	-2.4	-0.7	-6.8
1987	2.8	1.9	-0.3	-3.6	-0.5	2.9	1.9	0.4	-3.2	-3.2	-1.4	3.0	0.4	-16.3	
1988	4.5	1.8	-2.5	-0.4	-1.0	4.1	-1.3	-1.1	4.1	2.5	-1.7	0.5	9.6	-5.9	
1989	4.4	-2.0	1.3	3.5	3.4	3.0	5.1	-0.9	-0.1	1.0	1.1	0.7	22.3	-3.4	
1990	-4.8	0.1	1.0	-2.8	6.4	0.9	0.3	-6.1	-0.8	1.4	5.2	2.3	2.6	-9.3	
1991	2.6	2.9	0.9	0.9	1.3	-2.0	2.4	3.0	1.4	0.4	-1.8	8.1	21.6	-3.7	
1992	-2.8	0.8	-1.5	1.3	2.0	-0.3	4.0	-0.6	1.3	-0.6	1.9	2.3	7.9	-4.4	
1993	1.5	1.6	1.0	-0.7	1.3	2.6	3.7	3.9	-0.2	1.3	-0.8	0.8	12.4	-3.9	
1994	2.9	-3.4	-3.9	0.2	0.6	1.3	-3.8	1.0	-3.8	1.0	-1.8	1.2	-2.8	-9.4	
1995	2.9	3.4	1.7	2.2	6.0	1.5	1.1	1.3	3.2	3.2	2.7	34.5	2.6	-2.7	
1996	1.4	-2.7	-0.5	-0.5	0.9	1.5	-2.3	3.0	3.8	3.5	5.2	-2.4	8.0	-7.3	
1997	1.8	0.2	-3.1	3.4	2.4	2.2	6.1	-3.3	3.4	1.3	1.8	1.7	19.0	-6.7	
1998	1.7	2.0	2.3	0.7	0.4	3.1	-0.7	-0.2	3.7	0.1	2.5	2.4	19.4	-4.8	
1999	1.7	-4.3	1.1	1.1	-1.9	1.3	-1.5	-0.5	-0.1	2.2	-0.1	1.2	0.1	-6.9	
2000	-1.0	1.9	5.1	-1.3	-0.7	2.2	0.5	3.4	-2.4	1.0	1.5	1.9	12.3	-5.7	
2001	1.1	-2.0	-2.3	-0.3	0.0	-0.4	2.0	0.1	-1.6	4.0	-2.1	-0.7	-2.3	-8.6	
2002	0.2	0.1	-2.1	0.0	0.1	-0.8	-0.4	4.6	0.2	-0.2	1.0	0.2	2.8	-7.3	
2003	-1.1	1.4	-0.9	3.5	6.0	-0.5	-4.6	1.6	2.0	1.0	0.7	3.2	12.7	-9.8	
2004	1.9	1.8	0.1	-4.8	0.7	1.4	-0.9	2.5	1.0	1.5	0.1	2.8	8.2	-7.8	
2005	-0.2	0.1	-1.2	0.9	3.1	1.3	0.6	0.9	-1.6	-2.4	1.9	1.0	4.5	-4.8	
2006	0.6	0.9	-2.1	-0.7	-1.6	0.9	1.6	2.7	1.3	1.9	2.1	-1.9	7.6	-5.4	
2007	0.3	0.9	-0.8	1.9	0.4	-1.2	0.5	1.5	2.3	1.7	1.7	0.9	12.8	-4.3	
2008	-1.8	-1.4	0.6	-0.9	-0.9	0.9	-2.9	-2.9	-2.9	-2.9	10.1	-5.8	-2.6	-19.9	
2009	-11.4	-5.1	5.9	-1.5	-0.5	0.4	3.9	3.0	3.0	-2.3	3.6	-3.6	-5.9	-17.7	
2010	-0.9	1.1	1.4	2.3	-0.8	1.4	2.0	3.3	3.7	0.0	-0.8	2.2	15.9	-4.3	
2011	1.0	2.7	0.0	2.6	0.9	-2.1	1.3	2.3	4.6	3.3	0.9	2.4	21.5	-3.1	
2012	2.2	1.7	0.6	1.6	1.1	1.1	2.6	0.5	0.5	-1.3	0.8	-1.1	10.5	-3.1	
2013	1.2	1.2	1.6	3.0	-2.3	-2.0	1.3	-2.5	2.2	3.3	-0.4	0.8	7.5	-6.6	
2014	1.2	2.1	0.7	1.3	2.7	1.0	-0.6	4.3	-1.7	2.6	2.9	1.2	19.0	-2.6	
2015	3.5	-0.3	-0.5	-1.1	-0.1	-2.8	3.0	-3.6	0.3	3.6	-0.3	-0.9	0.5	-7.5	
2016	0.6	1.9	2.8	-0.1	1.2	1.0	1.0	1.0	-0.8	0.3	-0.3	-0.9	7.6	-2.1	
Avg	0.6	0.4	0.2	0.4	1.0	0.6	0.9	1.0	0.6	0.9	1.3	1.3	9.4	-6.6	

risk.w.60.40.CASH	Jan	Feb	Mar	Apr	May	Jun	Jul	Aug	Sep	Oct	Nov	Dec	Year	MaxDD
1986							2.2	1.1	2.4	-1.0	1.0	0.8	6.7	-1.5
1987	0.7	0.5	-0.4	-3.8	0.3	2.7	2.6	1.2	-1.5	-4.8	0.5	0.6	-1.8	-12.5
1988	4.0	1.1	-1.6	-0.9	-1.4	3.3	-1.2	-1.1	4.0	2.5	-1.8	0.5	7.5	-5.0
1989	4.4	-2.0	1.3	3.5	3.5	3.0	5.2	-0.9	-0.1	1.0	1.1	0.7	22.6	-3.4
1990	-4.9	0.4	0.0	-1.4	2.1	0.3	0.3	-6.1	0.8	1.2	3.7	1.8	-2.2	-12.1
1991	0.9	2.9	0.9	0.9	1.3	-2.1	2.5	3.1	1.4	0.4	-1.8	4.9	16.2	-3.5
1992	-2.8	0.8	-1.4	1.2	2.1	-0.3	3.9	-0.6	1.3	-0.6	1.9	3.3	7.9	-4.3
1993	1.1	1.5	1.0	-0.7	1.2	2.6	0.7	3.9	-0.2	1.3	-1.8	0.8	12.1	-3.8
1994	2.9	-3.4	-3.9	0.2	0.6	1.3	-3.8	1.0	-3.8	1.0	-1.8	1.2	-2.8	-9.4
1995	2.9	3.4	1.8	2.3	6.1	1.5	1.1	1.3	3.2	3.2	2.7	34.5	2.6	-2.7
1996	1.5	-2.6	-0.5	0.3	0.9	1.5	-2.3	3.0	3.8	3.5	5.2	-2.4	8.0	-7.3
1997	1.8	0.2	-3.1	3.4	2.4	2.3	6.0	-3.3	3.3	1.3	1.8	1.7	17.7	-6.3
1998	1.7	2.0	2.2	0.7	0.4	3.1	-0.7	-0.2	3.1	-1.4	2.6	2.5	17.0	-4.9
1999	1.6	-4.4	1.8	1.1	-1.1	2.2	-1.1	-0.1	-0.2	-0.1	0.4	2.1	2.0	-5.0
2000	-2.2	0.1	5.1	-1.3	-0.7	2.2	0.5	1.7	-2.4	0.9	2.7	2.3	9.1	-5.6
2001	0.5	1.5	-0.2	-2.1	0.3	0.2	3.0	1.7	1.2	4.1	-4.1	-1.3	4.6	-7.3
2002	-0.1	0.9	-3.4	-1.2	0.4	1.6	2.5	4.6	3.3	-2.6	-0.8	3.0	8.3	-6.2
2003	-0.5	2.1	-1.0	0.7	6.1	-0.5	-4.7	1.0	-0.2	1.0	0.6	3.1	7.5	-9.7
2004	1.9	1.8	0.1	-4.8	0.8	1.4	-0.9	2.5	1.0	1.5	0.1	2.8	4.4	-7.0
2005	-0.2	0.1	-1.2	0.9	3.1	1.3	0.6	0.9	-1.6	-2.4	1.9	1.0	4.5	-4.8
2006	0.6	0.9	-2.1	-0.7	-1.6	0.9	1.6	2.7	1.3	1.9	2.1	-1.9	7.6	-5.4
2007	0.3	0.9	-0.8	1.9	0.4	-1.2	0.5	1.5	2.3	1.7	1.7	0.9	12.8	-4.3
2008	-1.8	-1.4	0.6	-0.9	-0.9	0.9	-2.9	-2.9	-2.9	-2.9	10.1	-5.8	-2.6	-19.9
2009	-8.9	-1.0	5.9	-1.5	-0.5	0.4	3.9	3.0	3.0	-2.3	3.6	-3.6	-5.9	-17.7
2010	-1.7	1.4	2.4	1.0	-3.4	1.4	-0.5	2.2	-1.1	0.0	-0.8	2.2	6.0	-5.6
2011	1.8	2.0	-0.1	1.6	-0.5	-2.0	1.3	2.3	7.5	-2.0	0.8	2.0	15.3	-5.8
2012	2.2	1.7	0.6	1.6	1.0	1.1	2.6	0.5	0.5	-1.3	0.8	-1.1	10.6	-3.1
2013	1.2	0.7	1.8	1.1	-2.4	-0.9	2.6	-2.1	1.9	2.8	1.3	1.5	9.6	-5.1
2014	-1.8	2.1	0.8	1.3	2.7	1.0	-0.6	4.2	-1.7	2.5	2.9	1.2	15.3	-2.9
2015	3.4	-0.3	-0.5	-1.1	-0.1	-2.8	3.0	-3.4	0.3	-0.3	0.0	-0.8	-2.8	-8.3
2016	-2.0	2.0	0											

risk-w-60-40-target6.cash	Jan	Feb	Mar	Apr	May	Jun	Jul	Aug	Sep	Oct	Nov	Dec	Year	MaxDD	
1986							0.0	-0.1	4.5	-4.9	1.8	1.9	-2.2	0.7	-6.0
1987	1.9	1.8	-0.3	-3.1	-0.3	1.9	1.4	0.3	-2.6	-0.3	0.1	2.1	2.6	-11.4	
1988	3.4	1.3	-2.1	-0.4	-0.9	4.1	-0.8	-0.7	3.2	2.0	-1.4	0.4	8.0	-4.5	
1989	3.4	-1.8	1.0	3.1	3.1	2.9	3.8	-0.9	0.0	1.2	1.1	0.7	18.9	-3.1	
1990	-4.8	0.0	0.6	-2.0	6.0	1.0	0.6	-5.1	0.1	1.3	3.3	1.9	2.4	-7.8	
1991	2.0	1.5	0.7	0.9	1.1	-1.5	2.3	3.0	1.4	0.4	-1.0	5.9	17.9	-2.6	
1992	-2.8	0.8	-1.3	1.2	1.8	0.0	3.9	-0.5	1.3	-0.7	1.8	2.3	8.0	-4.1	
1993	1.5	1.4	0.7	-0.4	0.8	2.3	0.6	3.9	-0.2	1.0	-1.7	0.7	11.0	-3.6	
1994	2.9	-3.5	-3.0	-0.5	0.2	-0.9	2.3	1.8	-2.3	0.7	-0.9	0.9	-2.6	-8.3	
1995	2.7	3.4	1.6	2.0	6.1	1.3	0.7	1.0	3.2	1.2	3.1	2.2	32.6	-2.0	
1996	1.3	-2.1	-0.5	-0.4	0.4	1.2	-2.3	0.0	2.8	3.0	3.9	-2.4	4.8	-6.5	
1997	1.2	0.1	-2.3	2.6	1.6	2.0	5.1	-2.5	2.4	1.1	1.2	1.7	14.9	-5.1	
1998	1.7	1.2	2.0	0.6	0.5	2.2	-0.7	-0.2	3.7	0.0	0.9	2.4	15.2	-4.8	
1999	1.3	-3.8	0.9	0.8	-1.5	0.9	-1.0	-0.3	0.3	1.1	0.0	0.8	-0.7	-5.3	
2000	-1.0	1.3	3.4	-0.8	-0.3	1.9	0.5	2.7	-2.4	0.9	1.6	1.8	9.8	-4.1	
2001	1.2	-1.2	-1.2	-0.5	0.2	-0.3	2.0	0.4	-1.6	2.9	-2.0	-0.7	-1.0	-6.5	
2002	0.1	0.2	-1.9	0.6	0.1	-0.8	0.0	3.6	0.4	-0.4	0.8	0.3	2.9	-5.4	
2003	-0.9	1.4	-0.9	3.4	6.1	-0.3	-3.0	0.8	1.5	0.8	0.7	3.2	13.1	-6.6	
2004	1.7	1.6	0.1	-3.7	0.4	0.9	-0.6	2.2	0.9	1.5	0.1	2.2	7.5	-6.2	
2005	-0.1	0.1	-0.9	0.8	2.6	1.2	0.4	0.9	-1.6	-2.3	1.5	0.9	3.4	-4.8	
2006	0.6	0.9	-2.2	-0.7	-1.4	0.6	1.4	2.3	2.2	1.9	2.1	-1.9	7.0	-5.1	
2007	0.3	0.8	-0.7	1.9	0.3	-1.2	0.6	1.5	1.0	1.2	1.7	-0.7	7.1	-4.3	
2008	-0.7	-0.8	0.5	-0.3	-0.9	-1.4	-0.9	1.8	-1.8	-3.8	3.6	3.3	-1.0	-8.5	
2009	-5.1	-2.1	2.4	-0.7	-0.2	0.1	2.0	1.9	2.2	-3.4	2.5	-2.8	-1.4	-7.8	
2010	-0.8	0.7	1.0	2.1	-0.6	1.0	1.7	2.8	2.7	0.2	-0.7	1.0	11.8	-3.7	
2011	0.8	2.4	-0.1	2.5	0.7	-2.0	1.1	1.5	1.8	2.1	0.7	1.8	14.2	-2.7	
2012	1.7	1.7	0.6	1.5	0.9	1.1	2.6	0.5	0.5	-1.3	0.8	-1.1	9.7	-3.0	
2013	1.2	1.2	1.6	3.1	-2.4	-1.8	0.6	-1.8	1.5	3.0	-0.2	0.6	6.7	-6.1	
2014	1.1	2.1	0.8	1.3	2.7	1.0	-0.6	4.2	-1.5	2.5	2.0	1.2	18.0	-2.4	
2015	2.9	-0.3	-0.4	-0.6	-0.1	-1.8	2.8	-3.4	0.2	2.8	-0.3	-0.8	1.0	-5.6	
2016	0.6	1.5	1.9	-0.1	1.2	1.1							6.3	-1.7	
Avg	0.6	0.4	0.1	0.5	0.9	0.5	0.9	0.9	0.5	0.8	0.9	0.9	8.0	-5.1	

risk.w.60.40.target6.cash	weight	entry.date	exit.date	nhold	entry.price	exit.price	return
BOND	48.5	2015-10-30	2015-11-30	31	120.79	119.75	-0.42
CASH	6.1	2015-10-30	2015-11-30	31	84.46	84.24	-0.02
STOCK	35.3	2015-11-30	2015-12-31	31	205.32	201.77	-0.61
BOND	50	2015-11-30	2015-12-31	31	119.75	119.39	-0.15
CASH	14.7	2015-11-30	2015-12-31	31	84.24	84.12	-0.02
STOCK	24.2	2015-12-31	2016-01-29	29	201.77	191.73	-1.21
BOND	27.3	2015-12-31	2016-01-29	29	119.39	126.04	1.52
CASH	48.5	2015-12-31	2016-01-29	29	84.12	84.67	0.32
STOCK	27.3	2016-01-29	2016-02-29	31	191.73	191.57	-0.02
BOND	48.5	2016-01-29	2016-02-29	31	126.04	129.93	1.5
CASH	24.2	2016-01-29	2016-02-29	31	84.67	84.76	0.03
STOCK	29.4	2016-02-29	2016-03-31	31	191.57	204.46	1.98
BOND	41.2	2016-02-29	2016-03-31	31	129.93	129.81	-0.04
CASH	29.4	2016-02-29	2016-03-31	31	84.76	84.88	0.04
STOCK	54.5	2016-03-31	2016-04-29	29	204.46	205.26	0.21
BOND	45.5	2016-03-31	2016-04-29	29	129.81	128.86	-0.33
STOCK	51.5	2016-04-29	2016-05-31	32	205.26	208.75	0.88
BOND	48.5	2016-04-29	2016-05-31	32	128.86	129.89	0.39
STOCK	48.5	2016-05-31	2016-06-24	24	208.75	203.24	-1.28
BOND	51.5	2016-05-31	2016-06-24	24	129.89	135.78	2.33

Date	STOCK	BOND	CASH
2014-10-30	24	45	30
2014-11-26	59	41	0
2014-12-30	41	41	18
2015-01-29	50	50	0
2015-02-26	50	32	18
2015-03-30	26	24	50
2015-04-29	64	36	0
2015-05-28	38	24	38
2015-06-29	58	33	9
2015-07-30	50	41	9
2015-08-28	18	29	53
2015-09-29	36	48	15
2015-10-29	45	48	6
2015-11-27	35	50	15
2015-12-30	24	27	48
2016-01-28	27	48	24
2016-02-26	29	41	29
2016-03-30	55	45	0
2016-04-28	52	48	0
2016-05-27	48	52	0